



Frankoma

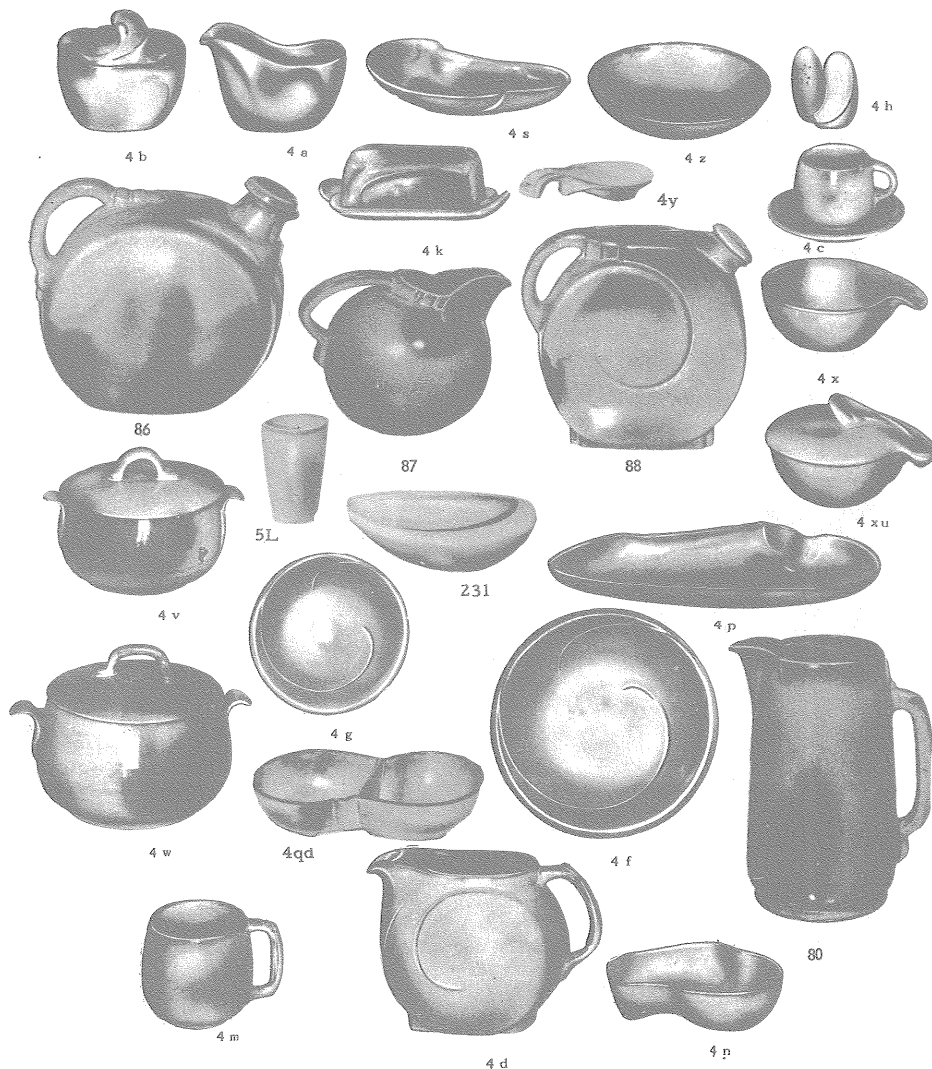
FINE POTTERY



MAYAN-AZTEC

16-pc. Starter Set	14.00	7hs—salt and pepper	1.00
7a—6 oz. creamer	1.00	7j—2 cup tea pot	1.20
7b—6 oz. sugar	1.00	7m—16 oz. mug	1.00
7c—5 oz. cup75	7n—1 qt. service dish	1.50
7e—saucer75	7p—17" platter	5.00
7cl—8 oz. mug80	7q—13" platter	2.50
7d—60 oz. pitcher	2.00	7t—6 cup tea pot	2.00
7f—9" plate	1.50	7u—10 oz. baker	1.00
7fc—15" chop plate	7.00	7v—2 qt. casserole	2.50
7fs—Cherokee Alphabet plate, 9"	2.00	7w—3 qt. casserole	3.50
7fl—10½" plate (not shown)	1.60	7x—16 oz. chili, soup, or cereal60
7g—7" plate80	7xl—24 oz. service dish	1.00

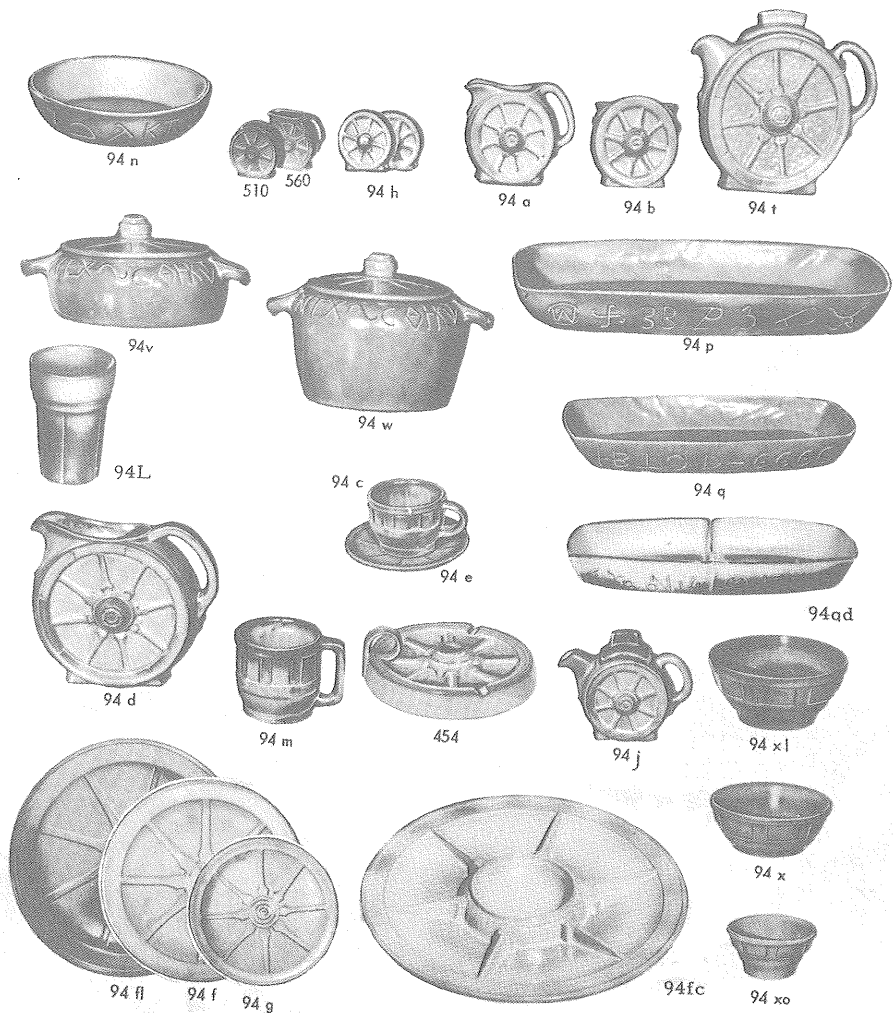
THIS PAGE AVAILABLE IN PRAIRIE GREEN, DESERT GOLD, WHITE SAND



LAZYBONES

16-pc. Starter Set	14.00	88—1½ qt. water jug	2.00
4a—8 oz. creamer	1.00	4m—16 oz. Mug	1.00
4b—8 oz. sugar	1.00	4n—service bowl	1.25
4c—5 oz. cup75	4p—platter	2.50
4d—2 qt. pitcher	2.00	4s—bone dish80
4e—5" saucer75	4v—1½ qt. baker	2.50
4f—10" plate	1.60	4w—3 qt. baker	3.50
4g—7" Plate80	4x—16 oz. bowl80
4h—salt and pepper	1.00	4xu—covered bowl	1.50
4k—covered butter dish	1.50	4z—6¼" salad bowl	1.00
5l—12 oz. tumbler75	231—service dish	2.00
80—2 qt. pitcher	2.00	4qd—2 section serving dish	2.50
86—2 qt. water jug	2.00	4y—spoon holder, 6"	1.00
87—1 qt. pitcher	1.50		

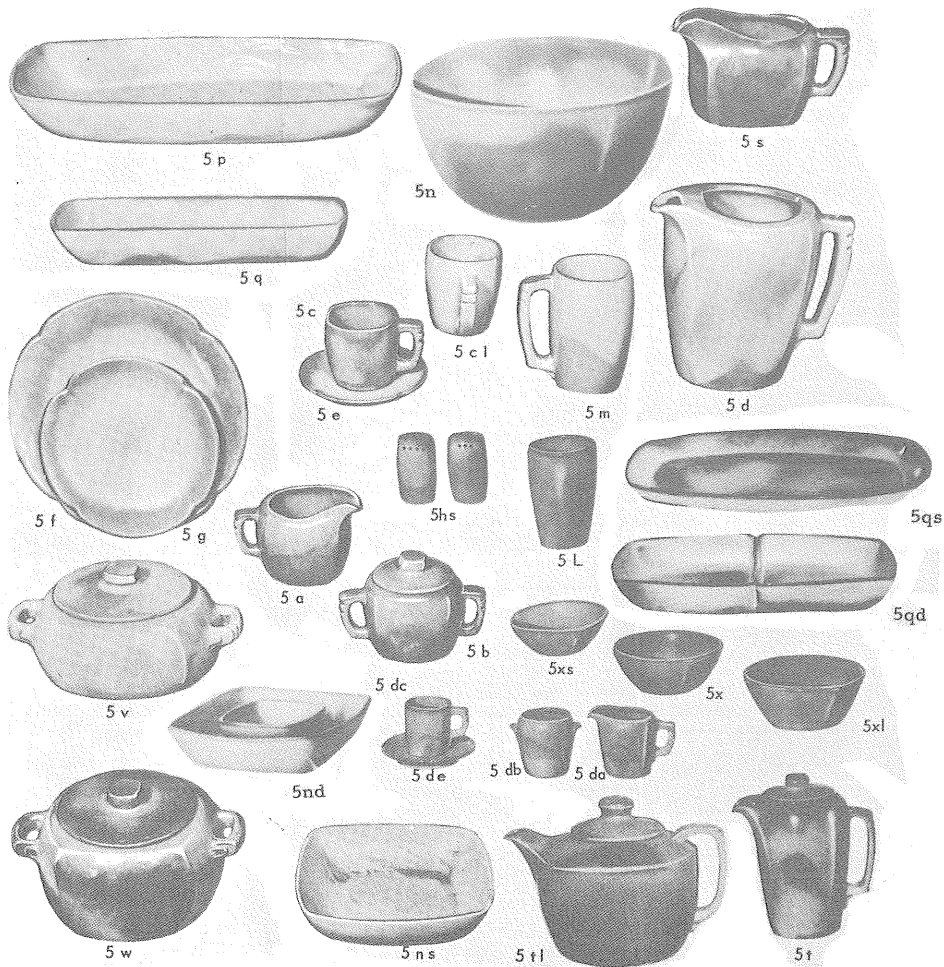
THIS PAGE AVAILABLE IN PRAIRIE GREEN, DESERT GOLD, AND CLAY BLUE



WAGON WHEEL

16-pc. Starter Set	14.00	94l—12 oz. tumbler75
94a—10 oz. creamer	1.00	94p—16" platter	5.00
94b—10 oz. sugar with lid	1.00	94q—13" platter	2.50
94c—5 oz. cup75	94qd—2 sec. service dish, 13"	2.50
94e—5" saucer75	94t—6 cup tea pot	2.00
94d—2 qt. pitcher	2.00	94v—2 qt. baker	2.50
94f—9" plate	1.50	94w—3 qt. baker	3.50
94fc—7 sec. lazy susan, 15"	7.50	94x—16 oz. chili, soup, or cereal60
94fl—10½" dinner plate	1.60	94xl—24 oz. service bowl	1.00
94g—7" plate80	94xo—5 oz. dessert50
94h—salt and pepper, pair	1.00	510—individual sugar50
94j—2 cup tea pot	1.20	560—individual creamer50
94m—16 oz. mug	1.00	454—candle holder ash tray	1.50
94n—1 qt. service dish	1.50		

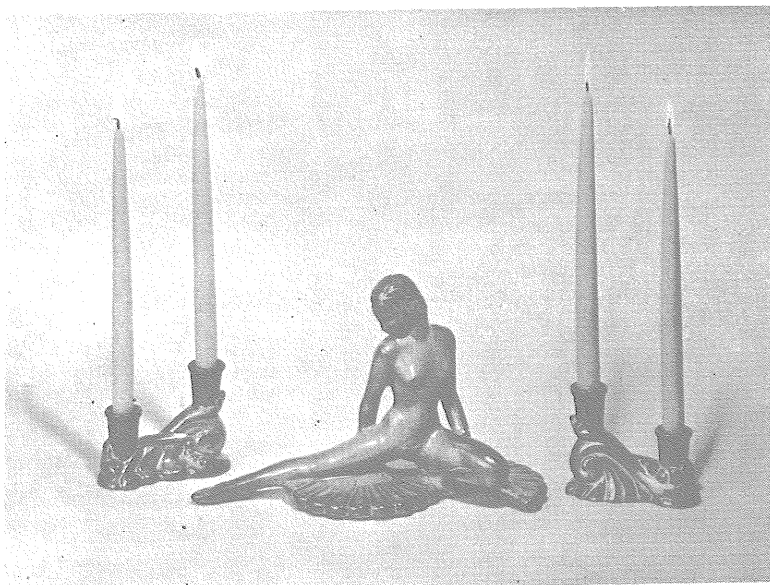
THIS PAGE AVAILABLE IN PRAIRIE GREEN, DESERT GOLD



OKLAHOMA PLAINSMAN

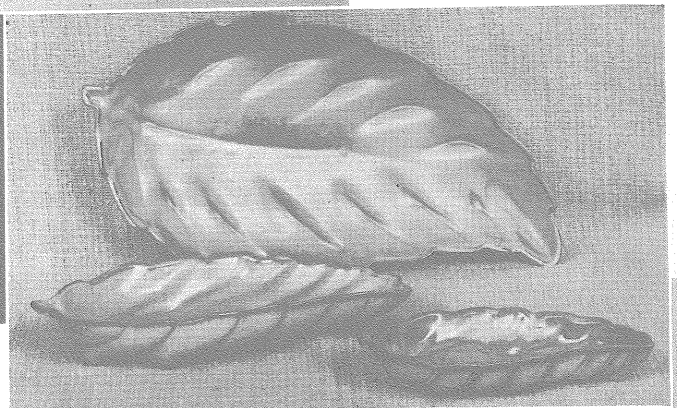
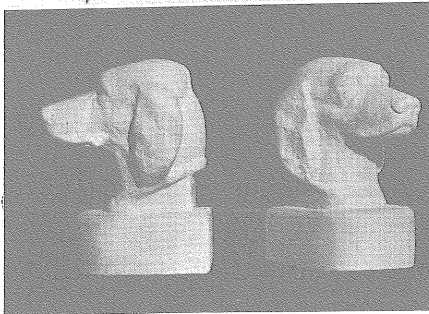
16-pc. Starter Set	14.00	5ns—9" service bowl	2.00
5a—12 oz. creamer	1.00	5p—16" platter	5.00
5b—12 oz. sugar	1.00	5q—13" platter	2.50
5c—7 oz. cup75	5qs—steak plate, 13"	2.00
5e—plain 6" saucer75	5qd—2 sec. service, 13"	2.50
5cl—12 oz. mug80	5s—28 oz. sauce or gravy boat	1.50
5d—3 qt. pitcher, with ice guard	3.00	5t—6 cup tea pot	2.00
5f—10 1/2" plate	1.60	5tl—12 cup pot	3.50
5fs—luncheon plate (not shown) 9"	1.50	5v—2 qt. baker	2.50
5g—8" plate	1.00	5w—3 qt. baker	3.50
5gs—7" plate (not shown)80	5x—16 oz. chili, soup, or cereal60
5hs—salt and pepper, pair	1.00	5xs—10 oz. dessert60
5l—12 oz. tumbler75	5xl—24 oz. salad or service bowl	1.00
5m—16 oz. mug	1.00	5da—small creamer75
5n—5 qt. salad bowl, 10"	5.00	5db—small sugar bowl75
5nd—cheese dip, 8"	2.50	5dce—demitasse cup and saucer, set	1.00

THIS PAGE AVAILABLE IN PRAIRIE GREEN, DESERT GOLD

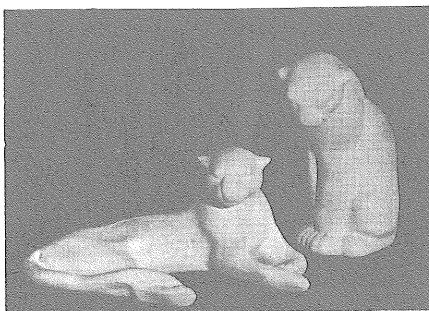


CLASSIC

*—refined, sculptured
traditional, forms.
—outstanding treasures
of fine ceramics.*

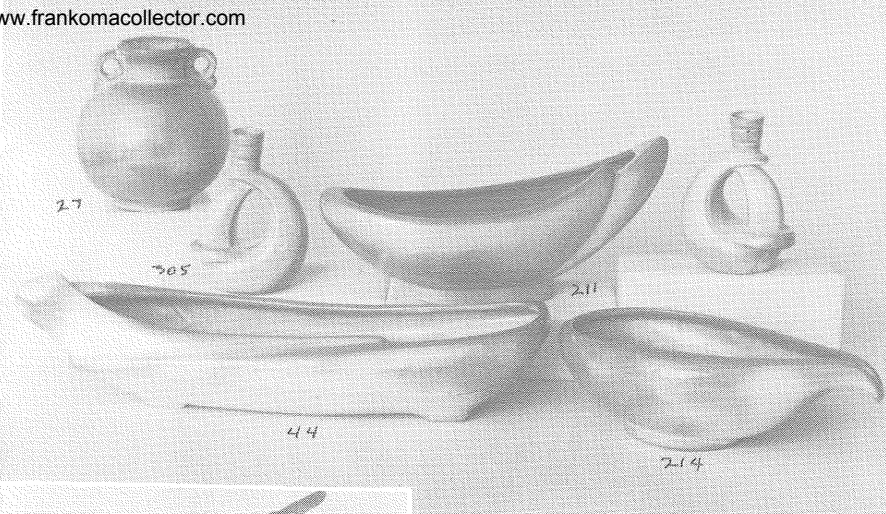


- 113—fan dancer, 13 in. 5.00
- 304—candle holders, pair 2.00
- 430—Irish Setter book ends, pair 4.00
- 114—seated puma, 7 in. 1.50
- 116—reclining puma, 9 in. 3.50
- 77—tall fireside vase, 17 in. 7.00
- 77A—tall fireside pitcher, 17 in. 7.00
- 225—small leaf, 7 in. 1.00
- 226—medium leaf, 11 in. 1.50
- 227—large leaf, 17 in. 5.00

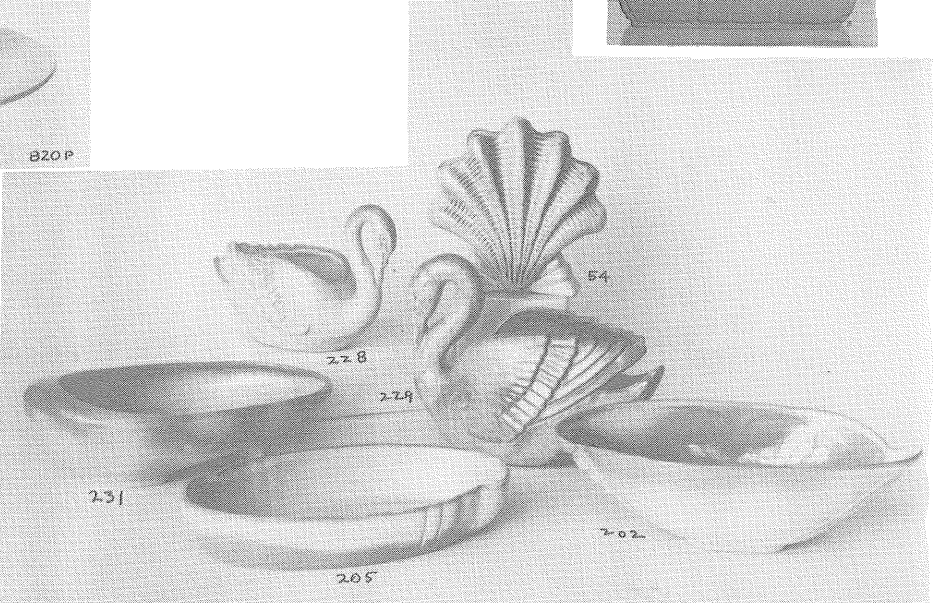
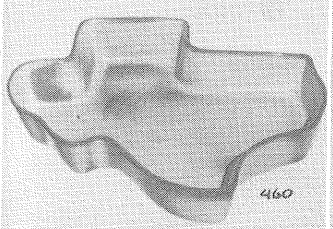
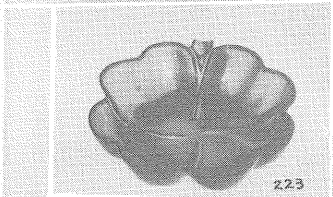
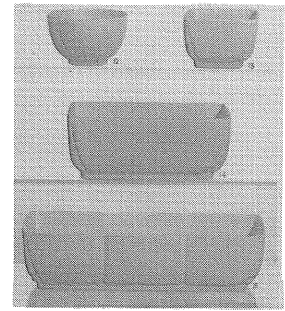
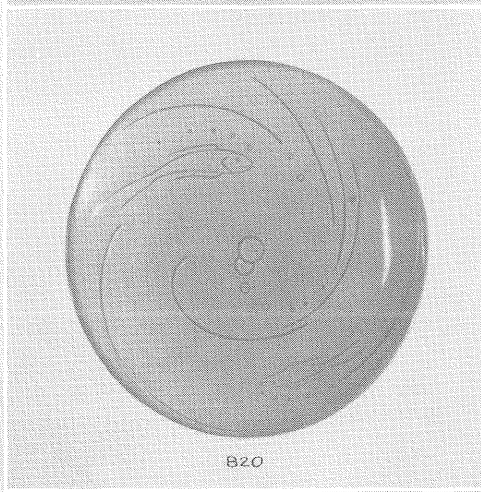


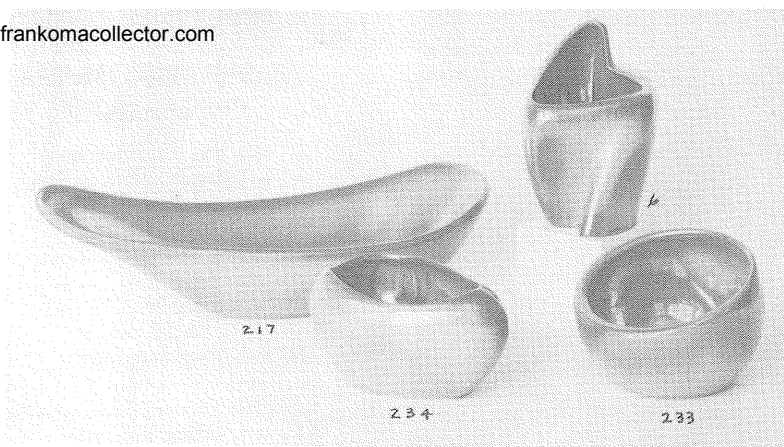
FRANKOMA CONTAINERS

are the foundation of
beautiful arrangements

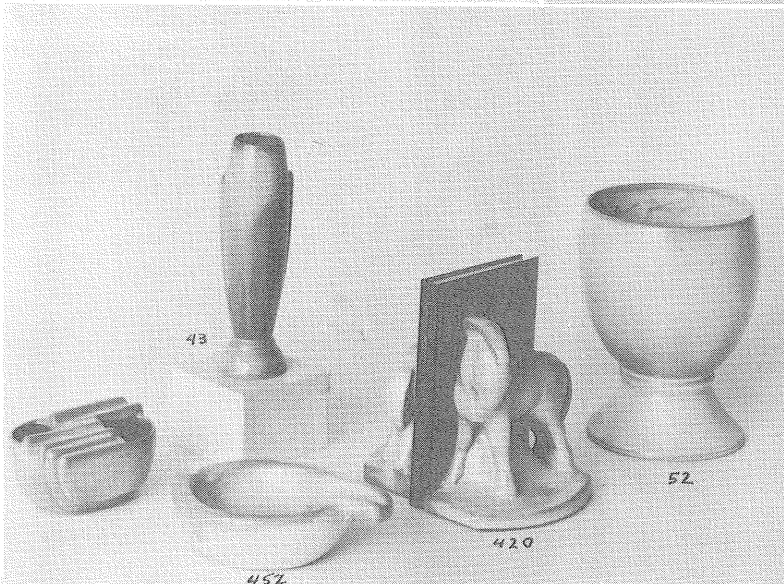
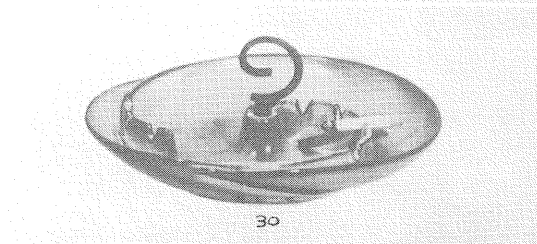
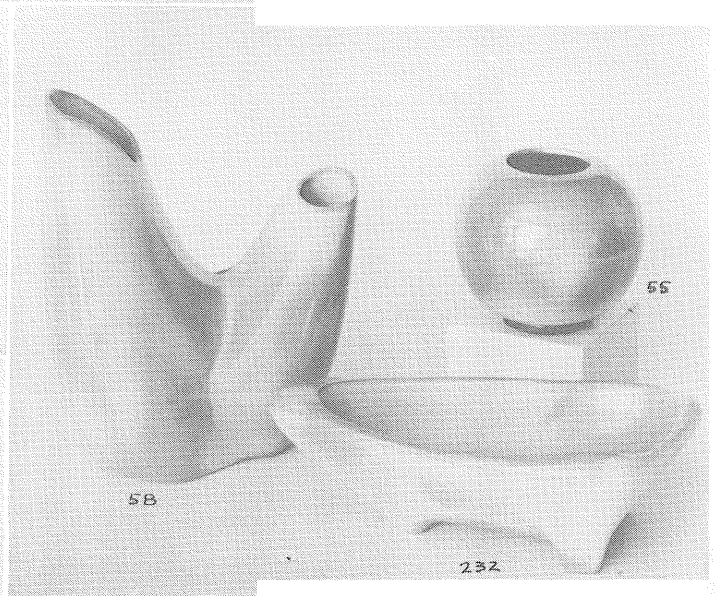
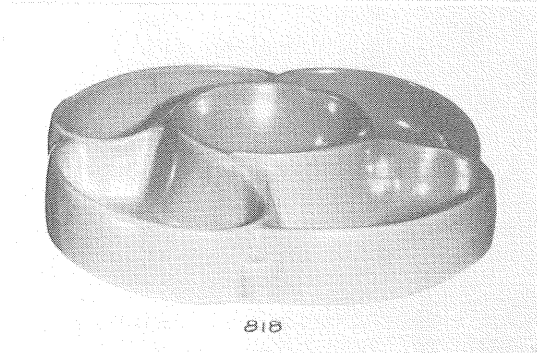


12—round planter, 4".....	.75
13—square planter, 4".....	.75
14—oblong planter, 8".....	1.50
15—oblong planter, 12".....	2.50
27—round handled vase, 7".....	1.50
44—long, deep centerpiece bowl, 18".....	5.00
54—shell vase, 6".....	1.50
202—deep, shaped bowl, 11½".....	2.00
205—oblong bowl, 10".....	1.50
211—crescent bowl, 12½".....	2.50
214—free form bowl, 12".....	2.00
223—4-leaf clover, 6".....	1.00
228—swan vase, 7½".....	1.50
229—swan vase, 9".....	3.50
231—abalone shell bowl, 11".....	2.00
305—candle holder, pr.	2.00
460—Texas bowl, 9".....	1.50
820—chop plate, 15".....	7.00
820P—bowl on pedestal, 15".....	8.50





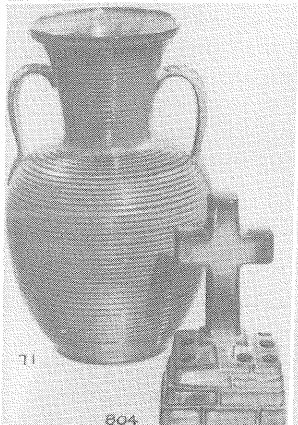
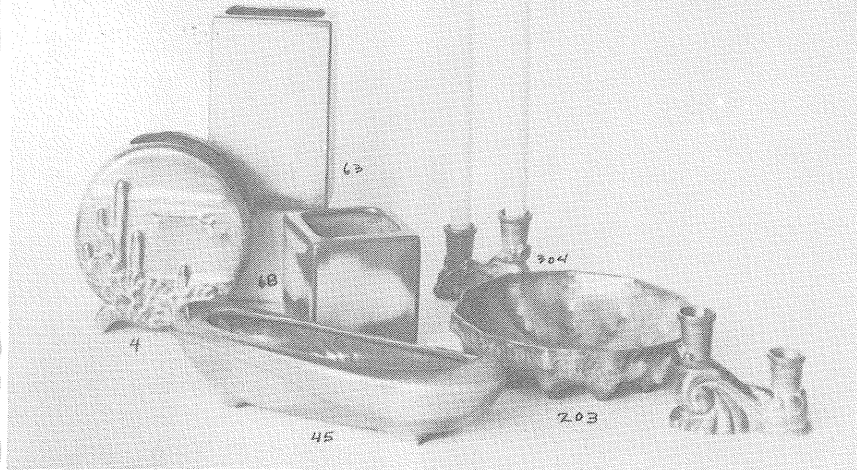
Sculptured
FREE FORMS
*modelled in
 the casual
 modern trend.*



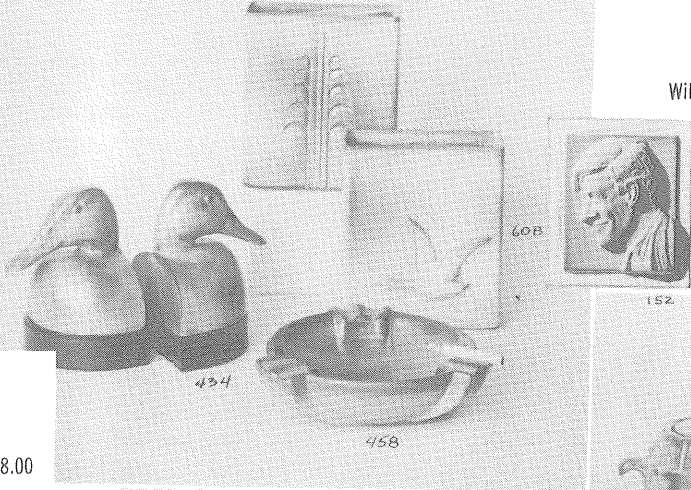
- 6—deep free form vase, 7"..... 1.50
- 43—large bud vase, 8"..... 1.00
- 52—pedestalled urn vase, 8"..... 2.50
- 55—ball vase with black foot, 5" 1.50
- 58—free form, 3 level vase, 9½" 3.50
- 217—large free form centerpiece,
 18"..... 5.00
- 232—triangle free form bowl, 11" 2.00
- 233—round bowl 1.50
- 234—deep free form bowl, 8"..... 1.50
- 420—charger horse book ends, pr. 4.00
- 452—free form ash tray 1.50
- 818—5 sec. 1 pc. lazy susan on
 ball bearing base, 12"..... 6.00
- 30—free form ash tray, without
 handle 3.00
- 30T—same ash tray, as shown,
 with iron handle 3.50
- 30S—same tray on floor stand... 5.00

*Beautiful
Practical
Serviceable*

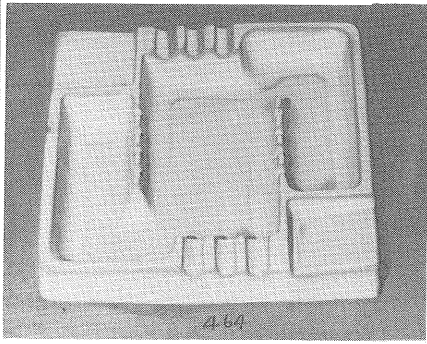
- 4—desert cactus vase, 7" 1.50
- 45—slender bowl, 12" 2.00
- 63—pillow vase, 7" 1.50
- 68—cube vase, 5" 1.50
- 203—knobby cactus bowl, 10"..... 2.00
- 304—double candle holders, pr.... 2.00
- 60B—goose vase, 6" 1.50
- 458—8" ash tray 1.50
- 97D—2 qt. barrel pitcher..... 2.00
- 97M—16 oz. mug 1.00
- 97U—10 oz. covered ramkin 1.00
- 97V—2 qt. barrel baker 2.00
- 71—leaf handled vase, 10" 3.00
- 804—cross on flower holder
bowl, 6" 1.00



434—mallard duck book ends, on black walnut bases, felted, pair 8.00

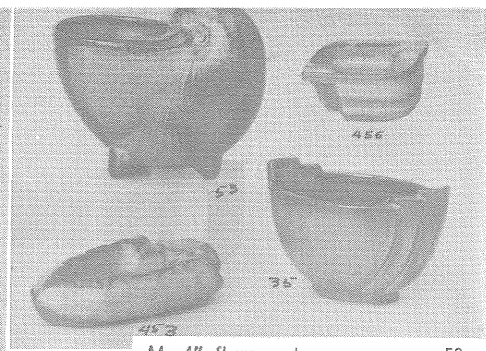
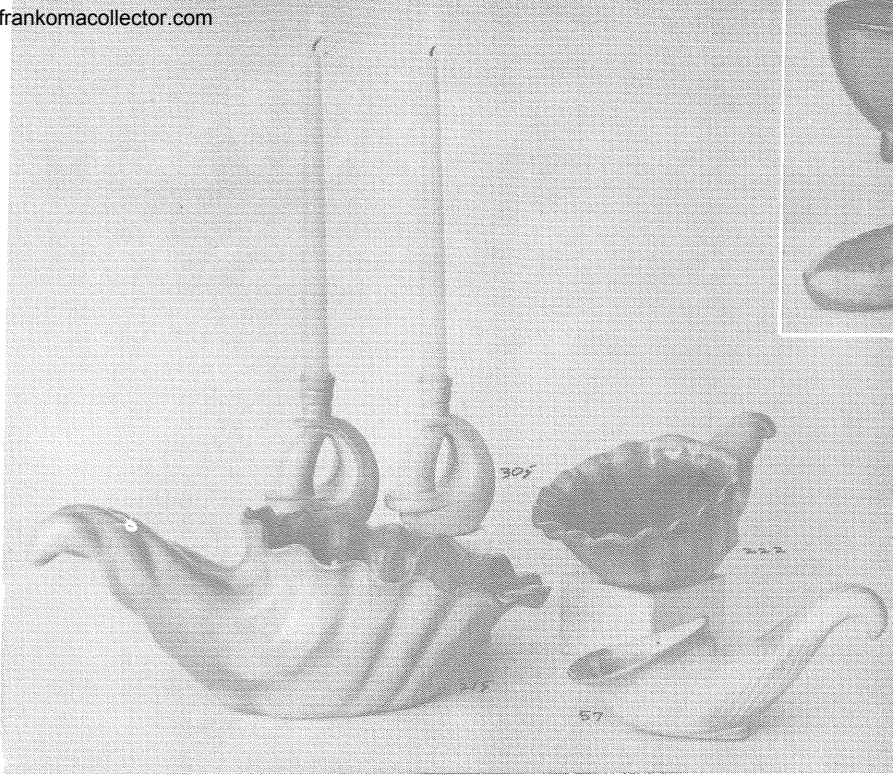


Will Rogers plaque, with wall hanger. Terra cotta with green or gold glazed border, 5" high 1.00

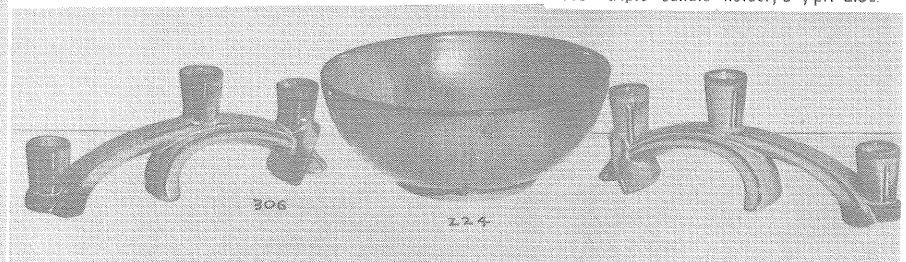
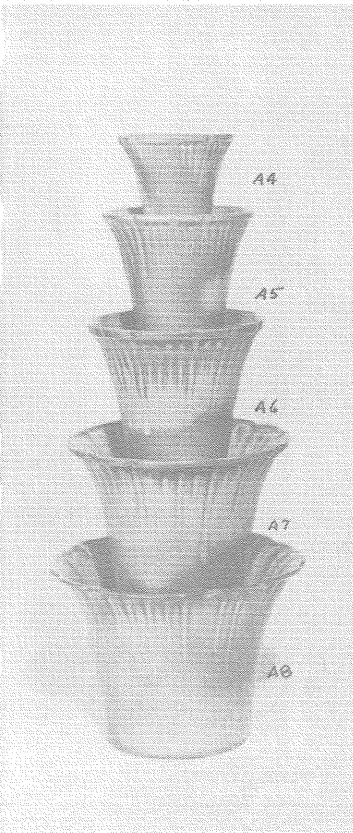


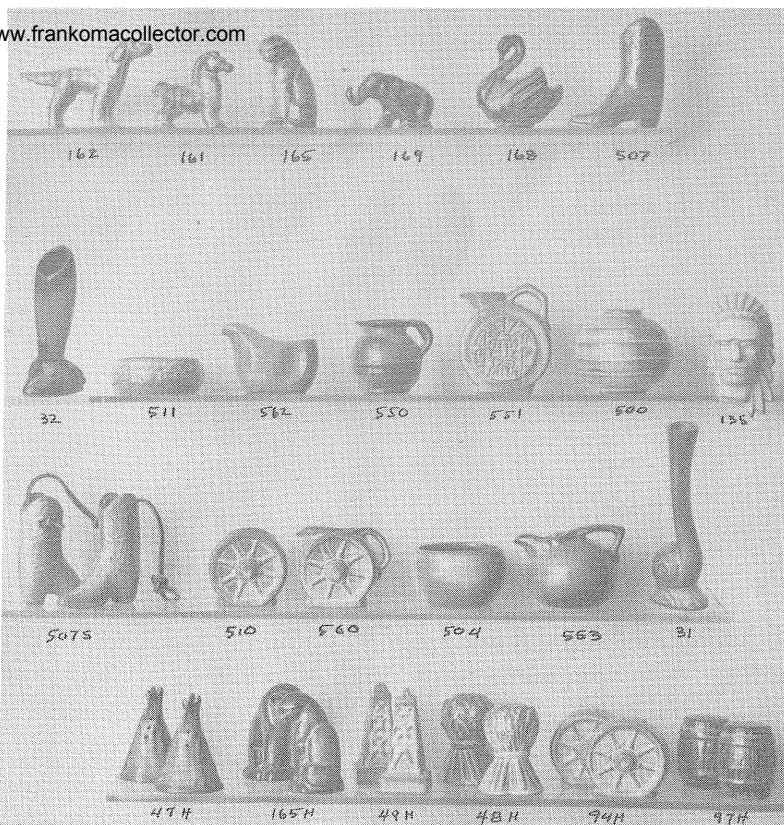
464—10½" large square ash tray, felted 5.00



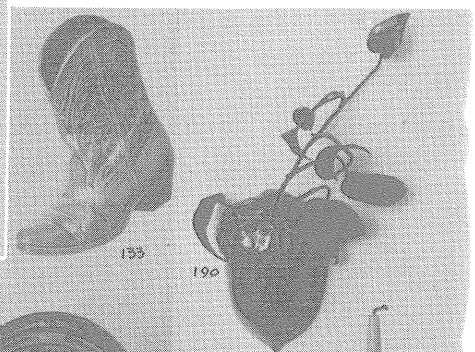
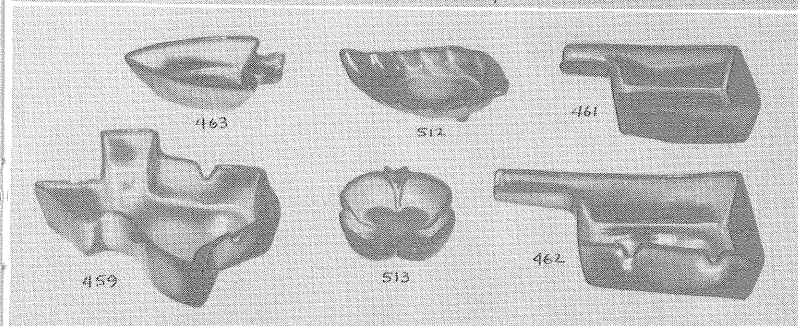


A4—4" flower pot50
A5—5" flower pot75
A6—6" flower pot	1.00
A7—7" flower pot	1.25
A8—8" flower pot	1.50
7—free form vase, 7"	1.50
9L—low textured bowl, 11"	2.00
35—carved, shaped bowl, 6"	1.00
53—chambered nautilus vase, 6"	1.50
57—small cornucopia, 10"	1.50
200—wedding ring bowl, 12"	3.50
212—deep round bowl, 7½"	1.50
215—large cornucopia, 15"	7.00
218—round swirl bowl, 12"	2.00
219—large centerpiece bowl, 18"	5.00
222—medium cornucopia, 12"	2.50
305—single candle holders, pr.	2.00
453—arrowhead ash tray	1.00
456—ash tray, 3"60
224—centerpiece bowl, 8"	2.00
306—triple candle holder, 8", pr.	2.50





- Miniature animals 160-16950
- Miniature vases and bowls,
500-51350
- Miniature pitchers, 550-56250
- Salt and peppers, pr..... 1.00
- 31—bud vase50
- 32—bud vase50
- 59—Indian design hanging canteen 1.50
- 93—24 oz. pitcher 1.50
- 93 set—pitcher and 6 cups..... 3.50
- 90C—3 oz. cups40
- 94—wagon wheel vase, 7" 1.50
- 133—cowboy boot vase, 6½" for
table or wall 1.50
- 135—Indian head wall plaque..... .50
- 190—acorn wall vase, 5½" 1.00
- 433—cowboy boot planter book
ends, pr. 5.00
- 454—wagon wheel candle holder
ash tray 1.50
- 459—Texas ash tray, 5" 1.00
- 461—Oklahoma ash tray, 4½"60
- 462—Oklahoma ash tray, 6" 1.00
- 463—arrowhead ash tray, 4"60
- 507S—2 boots on leather thong. 1.00

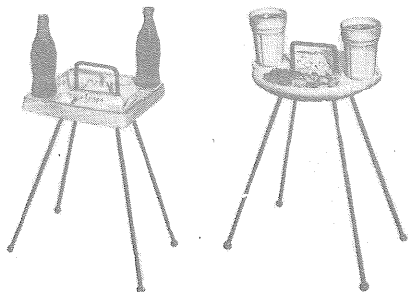


THE SERVA-TRAY

For smokers and snackers, anywhere, with refreshment corners, on sturdy wrought iron. Colors: Green, Gold, White, Black.



36M—with magazine rack as shown 7.50
 34M—same with square tray 7.50

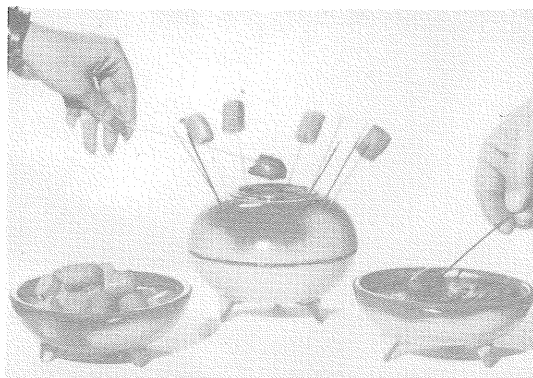


34
 10½" square
 \$6.50

36
 12" long
 \$6.50

- SMART
- NEW
- CLEAN
- HANDY
- SAFE

Colors:
 Green
 Gold
 Black
 White
 Turquoise

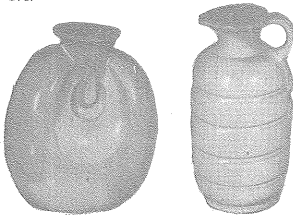


THE PARTY POW-WOW

The table Bar-B-Q for hot hors d'oeuvres, cocktail sausages, cheese chunks, marshmallows, etc. Pow-wow pot, 12 colored aluminum skewers, can Sterno heat. SET No. 8.25 - \$6.00 No. 826 Service Bowls—\$1.00 ea. extra

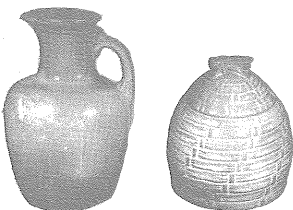
FANCY CONTAINERS

For honey, sorghum, salad dressing, etc.



832—24 oz
 \$1.50

831—16 oz.
 \$1.50

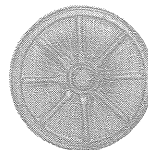


8—24 oz.
 \$1.50

803—12 oz.
 \$1.00

TRIVETS

Individually boxed with story or description on back. Drilled with holes for hanging 6" dia., each.....\$1.20



94TR
 Wagonwheel



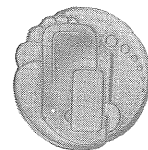
7TR
 Cherokee
 Alphabet



94TRH
 Horseshoes



94TRC
 Cattlebrand



4TR
 Lazybones
 Free Form

FRANKOMA POTTERY

— ON OLD KILN ROAD —

SAPULPA, OKLAHOMA

FRANKOMA is ovenproof but does not claim to be flame-proof. You will find it very durable and serviceable wherever china or pottery can be used. It is designed to be entirely satisfactory and we would appreciate letting the factory know of any deviation from this standard. You are a welcomed guest at the factory any time. Should you come during working hours, we will be glad to conduct you through the plant to see FRANKOMA made.